

DESKTOP ROBOT

TOYO 2019
JTB Series



**New
Released**

3-Axis Series Automated Dispensing Robot !!



Desktop Robot

JTB Series



Stepping
Motor



Max.Stroke
X500mm
Y500mm
Z100mm



Max.Speed
850mm/s



Max.Payload
X:15kg
Z:7kg



Points
30000



Controller
TSC400



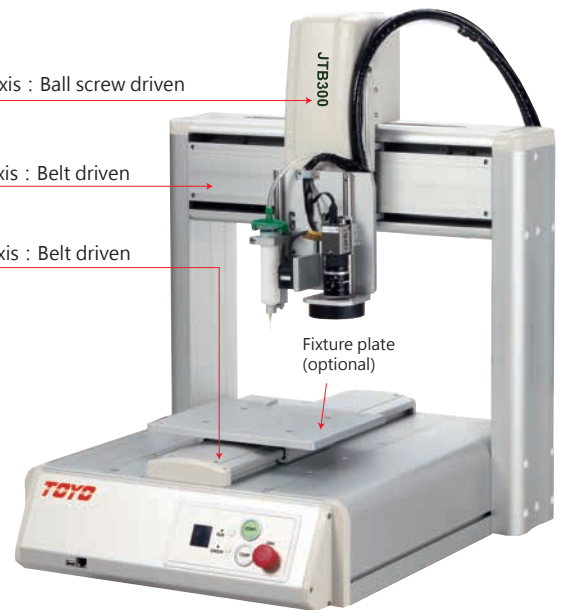
Input Voltage
AC110V/220V

Z axis : Ball screw driven

Y axis : Belt driven

X axis : Belt driven

Fixture plate
(optional)



- ◆ Max. Speed is up to 850 mm/s.
- ◆ Repeatability $\pm 0.01\text{mm}$.
- ◆ New Type 500D for double X axes to increase production efficiency.

◆ Increased Structural Rigidity

- Ball Screw is applied in Z axis.
- Faster, more precise, with greater structural rigidity for long-term, dependable use; increased stability for high speed tracking function.

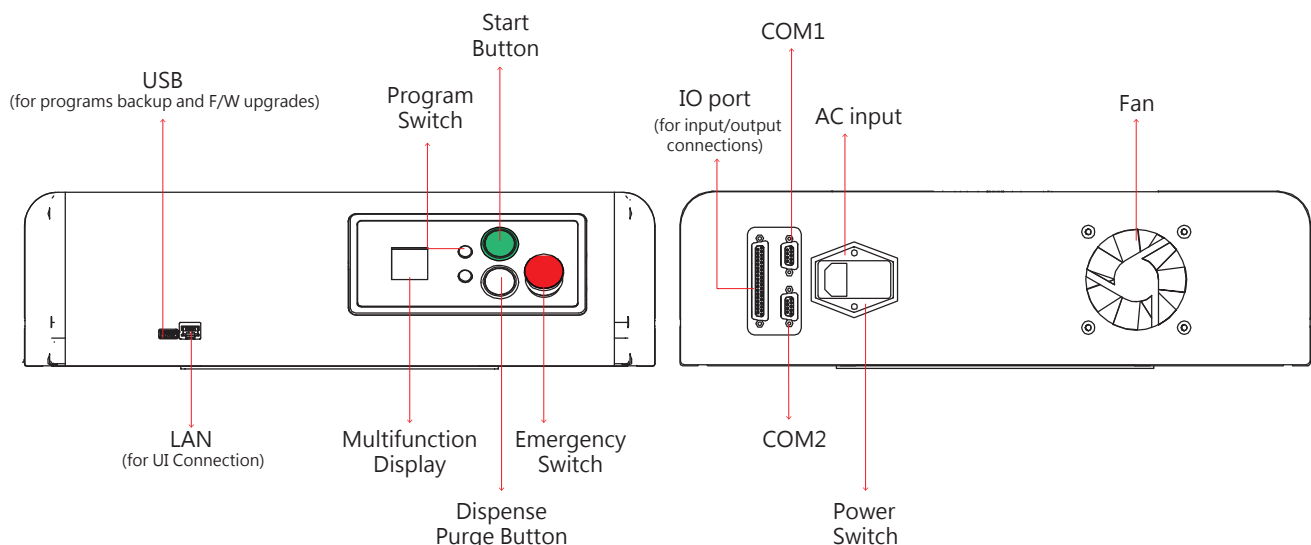
◆ Multi Software Functions

- Import image file into the software convert to a program is capable.
- Import DXF file into the software convert to a program is capable.
- CCD camera adjustment function. (option)
- Editing path and pallet by using software wizard.

◆ Communication Port

- Input/Output: 16/16
- USB port for programs backup and F/W upgrades
- Multifunction display
- COM1/COM2
- EMG、Start、Dispense Purge buttons

Operation Panel Diagram



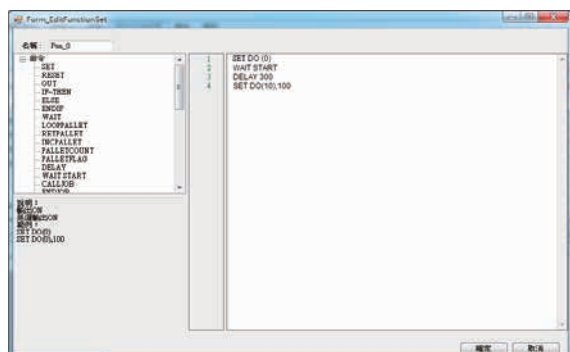
Quick teaching

Robot with dispensing unit attached.

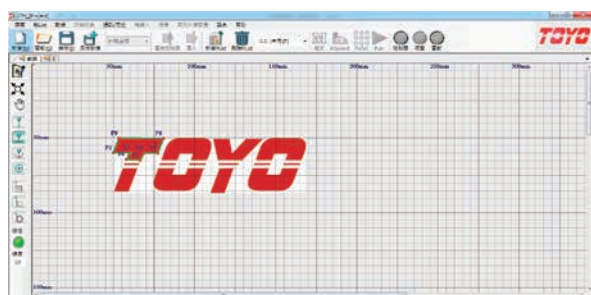


Transfer DXF to teaching points

- PC user interface brings DXF files and image files, into the editing domain and make user to draw points, lines, circles and circular arc.
- The simple scripter is built-in allowing the unit to easily coordinate with external devices on its own. (Maximum capacity 100 programs with 1,000 steps per program.)



- Point setting using background image data referencing.
You can complete path setting off line and then upload online.



Various Dispense Commands

- Click the icon of dispensing command to enter the associated command at a numbered address in a program.



Convenient fill-in dispensing functions which allow you to dispense like drawing a picture using only 2 points for a rectangle and 3 points for a circle.

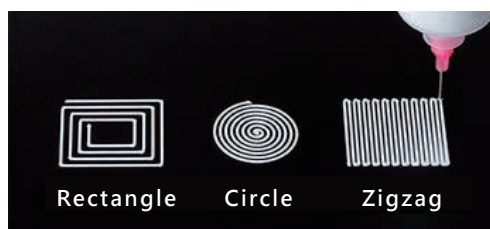
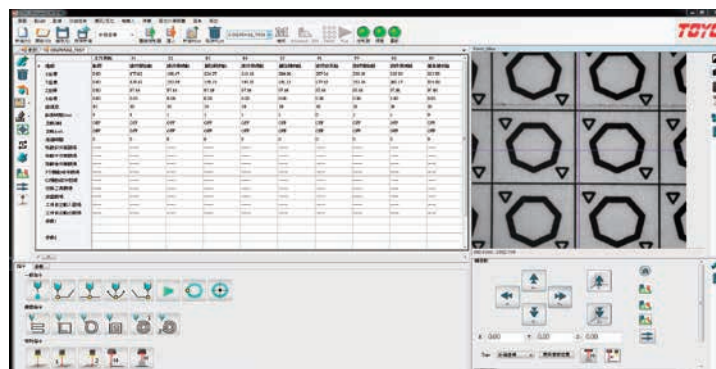


- **Easy Program Teaching :** You can conduct teaching just by inputting the items you need, such as positions and parameters.

[illegible]

CCD & Laser Sensor Automatic Calibration (option)

- Automatic calibration function : Enhanced CCD and laser sensor functions to match the needs of assembly equipments aiming for finer precision.



Rectangle

Circle

Zigzag

Specifications

Model			JTB200	JTB300	JTB400	JTB500	JTB500D
Operating Range	X/Y axis (mm)		200/200	300/300	400/400	500/500	500/500 (Double X Axes)
	Z axis (mm)		100	100	100	100	100
Maximum Portable Load	X axis (kg)		8	15	15	15	X1:10 ; X2:10
	Z axis (kg)		4	7	7	7	7
Maximum Speed ^{*1} PTP Movement setting range %	X and Y axes (mm/s)		700(7~700)	900(9~900)	900(9~900)	900(9~900)	900(9~900)
	Z axis (mm/s)		250(2.5~250)	400(4~400)	400(4~400)	400(4~400)	400(4~400)
Maximum Speed ^{*1} CP Movement setting range %	X, Y and Z Synthesized speed (mm/s)		600(0.1~600)	850(0.1~850)	850(0.1~850)	850(0.1~850)	850(0.1~850)
Repeatability ^{*2}	X/Y axis (mm)		±0.01	±0.01	±0.01	±0.01	±0.01
	Z axis (mm)		±0.01	±0.01	±0.01	±0.01	±0.01
Dimensions/Weight	W×D×H (mm)		497×454×672	597×554×672	697×654×672	797×754×672	797×754×672
	Weight (kg)		33	41	51	61	61
Common Specifications							
Drive Method			5 phase pulse motor drive				
Control Method			PTP (Point to Point) control, CP (Continuous Path) control				
Interpolating Function			3-dimensional linear and arc interpolation				
Point Input Method			Remote teaching (JOG)/ Manual Data Input (MDI)				
Teaching Method			UI Software (PC) : brings DXF files into the editing domain and allows you import image files to draw points				
			APP(PAD) : Ponit teaching and simple programing editing				
Screen Display	Languages		English · Chinese · Japanese.				
	Units		mm				
Program Capacity			100 programs (1~100)				
Data Capacity			10,000 Points				
External Input/Output	IO		16 IN / 16 OUT (NPN/PNP sharing)				
	LAN		Ethernet for UI (also can connect external device via HUB)				
	COM		RS-232C (for external device control)				
	USB		F/W upgrade I programs backup				
Power Source (V)			AC 100~240, 5A				
Operating Ambient Temperature (°C)			0 ~ 40 °C				
Operating Relative Humidity (%)			20 ~ 90 (Non-condensing)				

Note :

*1 · Maximum speed cannot be achieved when the robot is bearing its maximum portable load.

*2 · Repeatability will be infuenced by environment temperature and humidity. Position repeatability is not a guarantee of absolute precision.

Exterior



JTB200



JTB300



JTB400



JTB500



JTB500D



TOYO Automation Co., Ltd.

Add: No.50, Yongkehuan Road, Yongkang District, Tainan City, Taiwan.

T:+886-6-2021347 F:+886-6-2025974

TOYO Robot (Shuzhou) Co., Ltd.

Add: No 586, Zhenxin East Road, Zhangpu Town, Kunshan City, Jiangsu Province, China.

T:+86-512-86890880 F:+86-512-86890881

TOYO Automation (Shenzhen) Co., Ltd.

Add: 1208 Mingjun Business Center Huarong Road, Baoan District, Shenzhen City, China.

T:+86-755-81713415 F:+86-755-81713435

